



Development

People

Competence

Quality

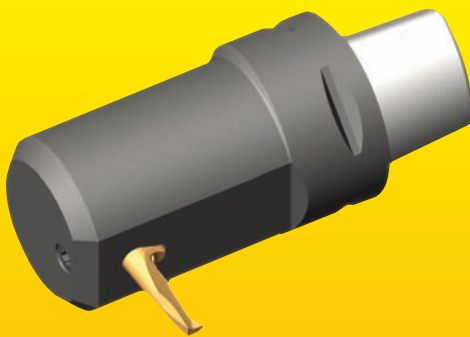
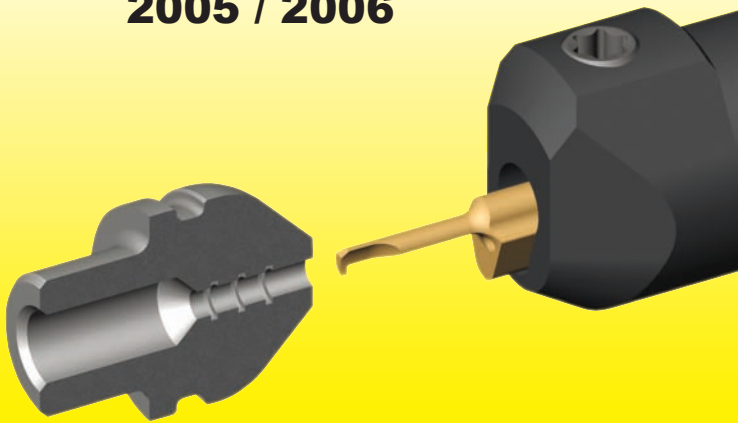
Training

Service

HORN - LEADERS IN GROOVING TECHNOLOGY



**Additions to Product Range
Supermini and Mini
2005 / 2006**



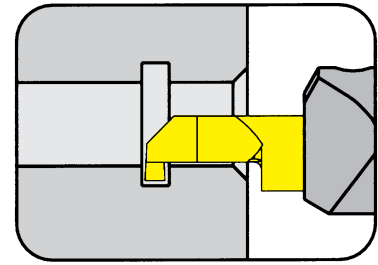
**GROOVING
PARTING OFF
GROOVE MILLING
BROACHING
PROFILE MILLING**



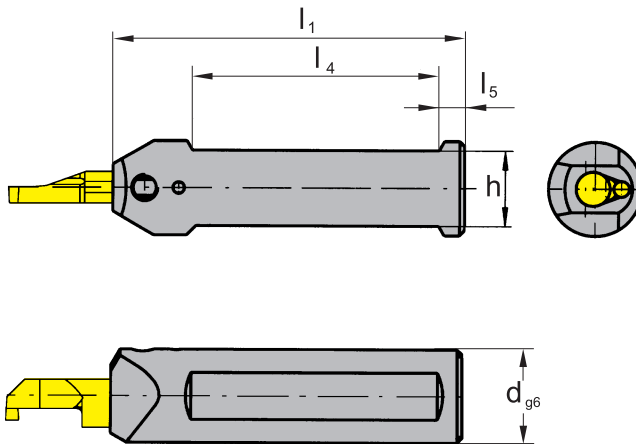
HORN USA, Inc.
320 Premier Court
Suite 205
Franklin, TN 37067
Phone: (888) 818-HORN
Fax: (615) 771-4101
sales@hornusa.com
www.hornusa.com

TOOLHOLDER type

B/BU105
with through coolant



Bore Ø from	.012" (0.3 mm)
Depth of groove up to	.098" (2.5 mm)
Width of groove up to	.079" (2.0 mm)



for use with insert

- Type U105
105

Right hand insert shown

Part number	d _{g6}	l ₁	l ₄	l ₅	h	Note
BU105.0750.5.3.01	.750	6.000	2.750	.200	.671	*
BU105.1000.5.3.01	1.000	6.000	2.750	.200	.921	*

Further shank sizes upon request.

Dimensions in inch

* ID thread M12x1.5 for coolant fitting adapter

Note

Toolholders can be used with right and left hand inserts.

Spare parts

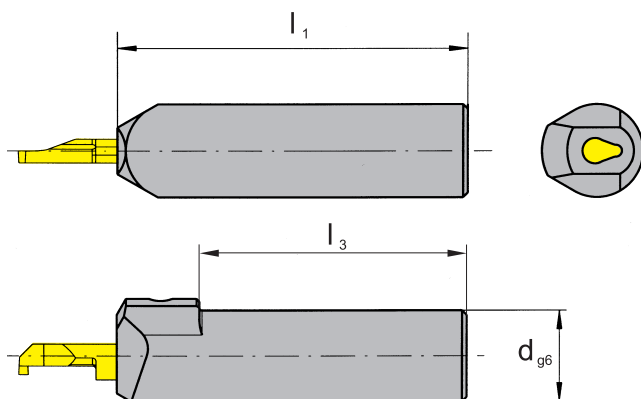
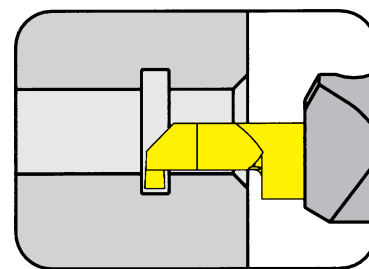
Toolholder	Screw	Torx screw driver
B/BU105...01	6.075 T15	T15

TOOLHOLDER type

B105

with through coolant

Bore Ø from	.012" (0.3 mm)
Depth of groove up to	.098" (2.5 mm)
Width of groove up to	.079" (2.0 mm)



for use with insert

- Type U105
105

Right hand insert shown

Part number	d _{g6}	l ₁	l ₃
B105.0010.01A	Ø 10	75	57
B105.0012.01A	Ø 12	75	63
B105.0016.01A	Ø 16	75	63

Further shank sizes upon request.

Dimensions in mm

Note

Toolholders can be used with right and left hand inserts.

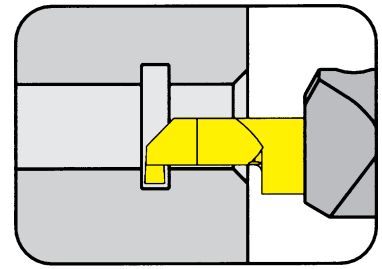
Spare parts

Toolholder	Screw	Torx screw driver
B105...01A	6.075 T15	T15

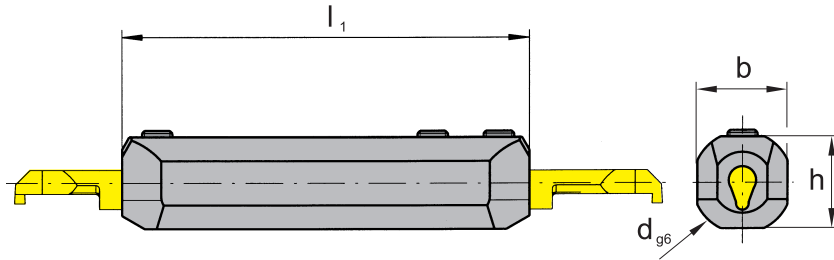
TOOLHOLDER type

B105

no coolant

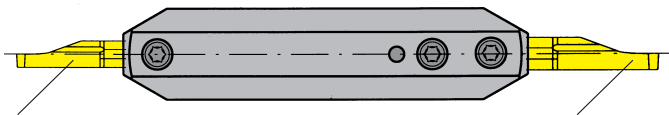


Bore Ø from	.012" (0.3 mm)
Depth of groove up to	.098" (2.5 mm)
Width of groove up to	.079" (2.0 mm)



for use with insert

- Type U105 / 105...2
105



Insert type U105/105

extended clamping shank insert type 105...2

Right hand insert shown

Part number	d_{g6}	l_1	b	h
B105.0020.1.03	Ø 20	80	18	18

Further shank sizes upon request.

Dimensions in mm

Note

Toolholders can be used with right and left hand inserts.

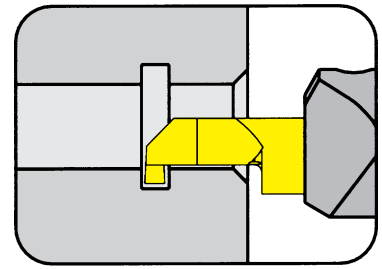
Spare parts

Toolholder	Screw	Torx screw driver
B105...03	6.075 T15	T15

TOOLHOLDER type

B105

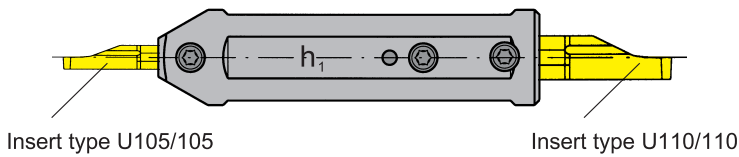
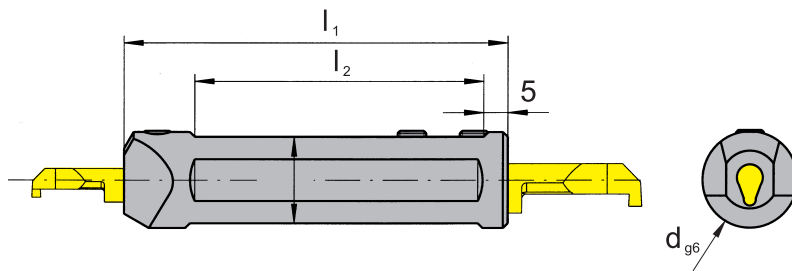
with through coolant



Bore Ø from	.012"/.236"	(0.3 / 6.0 mm)
Depth of groove up to	.098"/.157"	(2.5 / 4.0 mm)
Width of groove up to	.079"/.118"	(2.0 / 3.0 mm)

for use with insert

- Type U105/105
U110/110



Right hand insert shown

Part number	d _{g6}	l ₁	l ₂	h	h ₁
B105.0020.1.10	Ø 20	80	60	18	18

Further shank sizes upon request.

Dimensions in mm

Note

Toolholders can be used with right and left hand inserts.

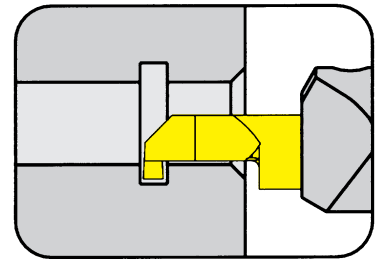
Spare parts

Toolholder	Screw	Torx screw driver
B105...01	6.075 T15	T15

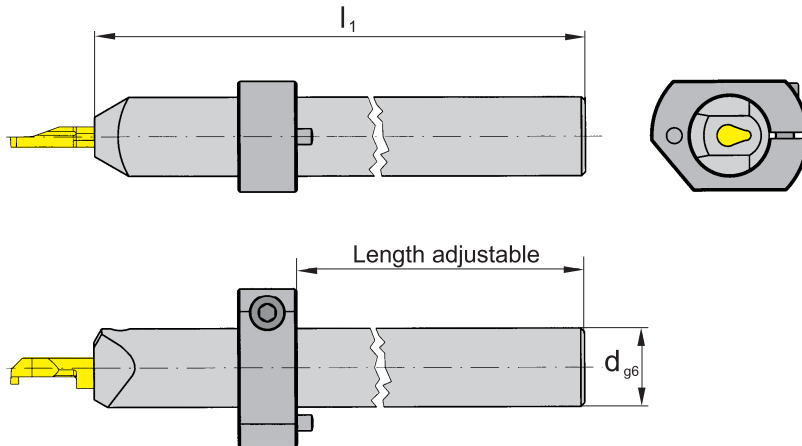
TOOLHOLDER type

B105

with through coolant



Bore Ø from	.012" (0.3 mm)
Depth of groove up to	.098" (2.5 mm)
Width of groove up to	.079" (2.0 mm)



for use with insert

- Type U105
105

Right hand insert shown

Part number "Toolholder"	d _{g6}	l ₁
B105.0020.2.01	Ø 20	150
B105.0025.2.01	Ø 25	150

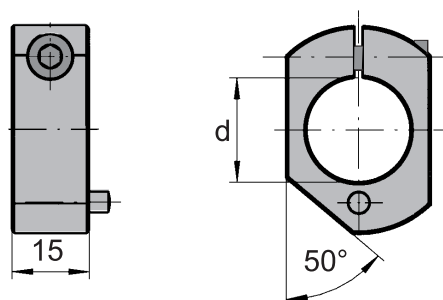
Further shank sizes upon request.

Dimensions in mm

Note

Toolholders can be used with right and left hand inserts.
Adjusting ring is not included with toolholder, separate order required!

ADJUSTING RING



Part number "Adjusting ring"	d	Type of machine
020.0020.1665	Ø 20 mm	Tornos DECO
020.0025.2234	Ø 25 mm	Tornos DECO

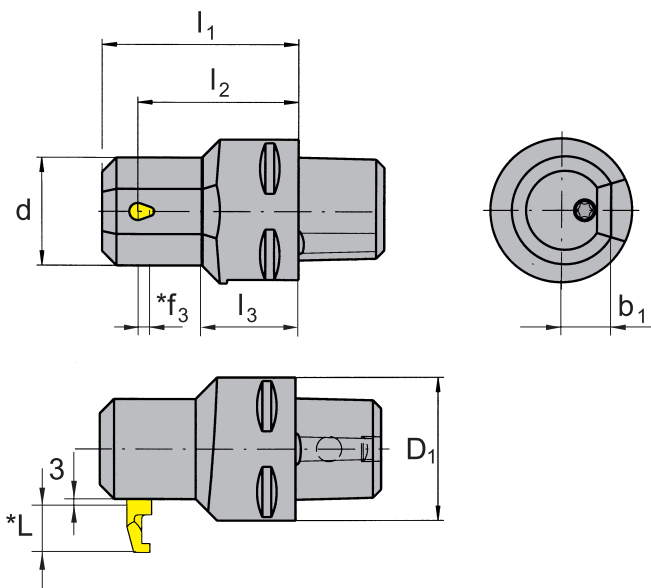
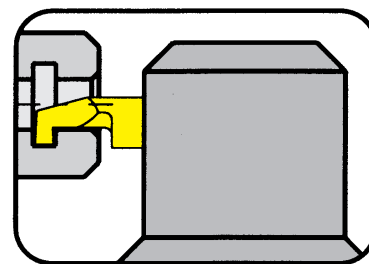
GROOVING (internal)



MODULAR TOOLING SYSTEMS

RB105.00C...

Adaptor for inserts type 105 Horn-Capto Licence Sandvik



for use with insert

- Type U105
105

INDEX Multi spindle system
MS32 / MS52



Part number	D ₁	d	l ₁	l ₂	l ₃	b ₁	Machine type
RB105.00C3.2.2.01	32	30	55	45	17	14	MS32
RB105.00C3.2.2.02	32	36	55	45	15	18	
RB105.00C4.2.2.01	40	30	55	45	26	14	MS52
RB105.00C4.2.2.02	40	36	55	45	22	18	

Further shank sizes upon request.

Dimensions in mm

* Dimensions f₃ and L please see inserts type 105 in our catalog "CARBIDE GROOVING TOOLS", Chapter A

Spare parts

Toolholder	Screw 	Torx screw driver 
RB105...	6.075 T15	T15

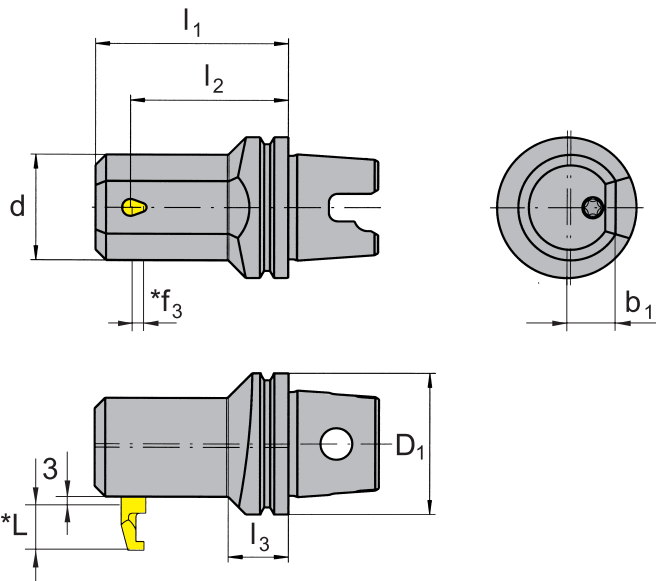
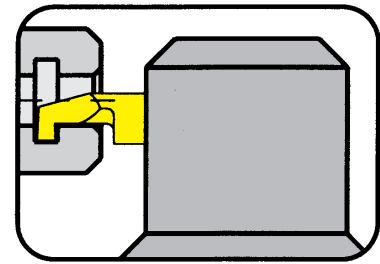
GROOVING (internal)



MODULAR TOOLING SYSTEMS

RB105.KM...

Adaptor for inserts type 105 Horn-KM Licence Kennametal



for use with insert

- Type U105
105

INDEX Multi spindle system
MS32 / MS52



Part number	D ₁	d	l ₁	l ₂	l ₃	b ₁	Machine type
RB105.KM40.2.2.01	40	36	55	45	17	14	MS32
RB105.KM40.2.2.02	40	36	55	45	14	18	
RB105.KM50.2.2.01	50	36	55	45	26	14	MS52
RB105.KM50.2.2.02	50	36	55	45	22	18	

Further shank sizes upon request.

Dimensions in mm

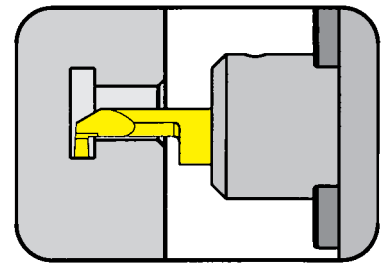
* Dimensions f₃ and L please see inserts type 105 in our catalog "CARBIDE GROOVING TOOLS", Chapter A

Spare parts

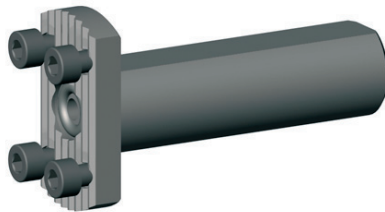
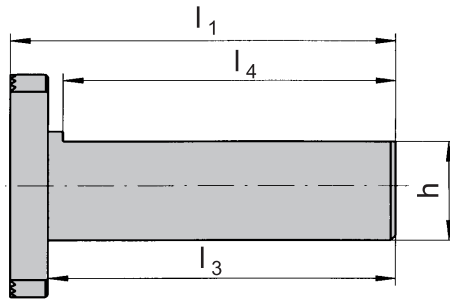
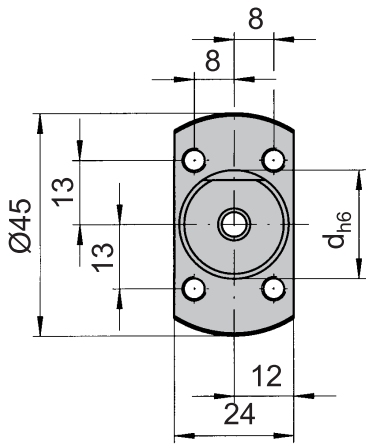
Toolholder	Screw 	Torx screw driver 
RB105...	6.075 T15	T15

TOOLHOLDER type

BGT



Adjustable round shanks for cartridge type
BKT105.2445.01/02



for use with cartridge

- Type BKT



Toolholder does not include cartridge

Part number	d _{h6}	L ₁	L ₃	L ₄	h	IK	Machine tool
BGT001.0010.50	10	57,5	50	47	9	•	
BGT001.0016.21	16	28,5	21	18	14	•	Star
BGT001.0R16.21	16	28,5	21	18	14	•	Star SR16/20R
BGT001.0020.100	20	107,5	100	97	18	•	Tornos
BGT001.0022.30	22	36,35	30	27	20	-	Star
BGT001.0022.70	22	77,5	70	67	20	•	Star
BGT001.0025.70	25	77,5	70	67	23	•	
BGT001.0028.80	28	87,5	81	77	26	•	Traub

Dimensions in mm

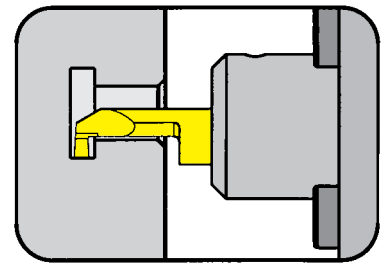
Spare parts

Toolholder	fastening screw	O-ring
BGT...	DIN912-M5x10 	DIN3770-7x3

Cartridge type

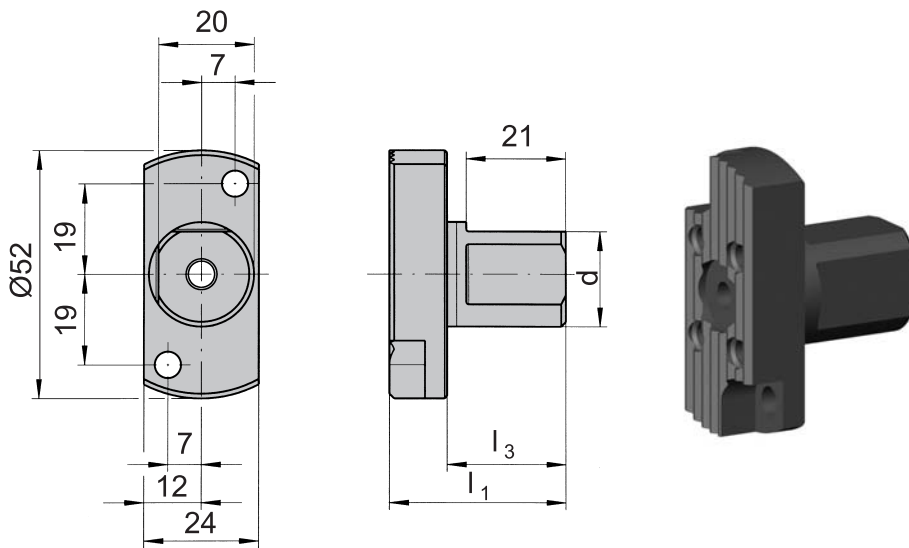
BGT

Adjustable round shanks for cartridge type
BKT105.2327.01



for use with cartridge

- Type BKT

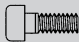


Toolholder does not include cartridge

Part number	d_{h6}	l_1	l_3	Insert type
BGT001.0R22.25	22	37	12	R/L 105...

Dimensions in mm

Spare parts

Toolholder	fastening screw 
BGT...	DIN912-M5x10

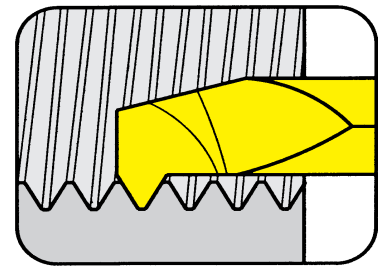
THREADING (Internal) partial profile



INSERT Type

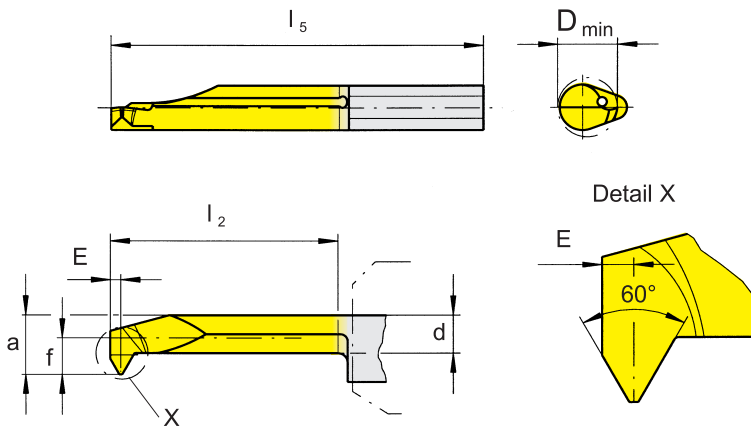
105

Bore Ø from	.118" (3.0 mm)
Pitch	0.75 - 1.0 mm
Threads per inch	24 - 64 tpi



for use with toolholder

- Type BU105
B105



Metric ISO thread

R = right hand version shown

Part number	Pitch		E	f	a	d	I ₂	I ₅	D _{min}
	tpi	mm							
R 105.0407.2.3	28-64	0.75	.022	.055	.106	.078	.591	1.181	.118
R 105.0407.3.5	28-64	0.75	.022	.091	.185	.138	.787	1.378	.197
R 105.0407.4.5									
R 105.0407.3.6	28-64	0.75	.022	.130	.224	.185	.787	1.378	.236
R 105.0510.3.5	24-32	1.0	.075	.083	.177	.138	.787	1.378	.190
R 105.0510.4.5									

Carbide grades			
MG12	TN35	TI25	TH35
○	●	●	○

- Standard
- Semistandard

Please check price and delivery for all ○ items

Dimensions in inch

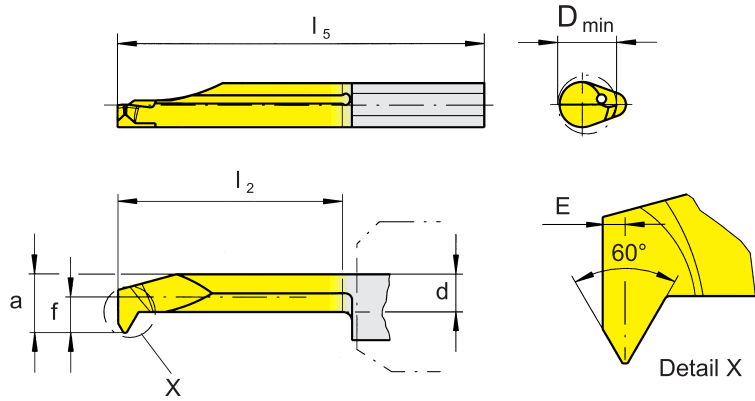
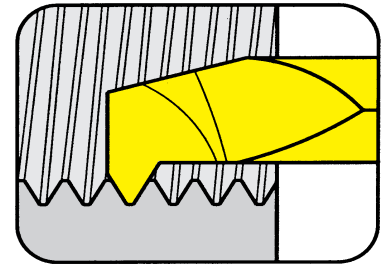
THREADING (Internal) partial profile



INSERT Type

105

Bore Ø from	.118" (3.0 mm)
Pitch	0.5 mm
Threads per inch	32 - 64 tpi



for use with toolholder

- Type BU105
B105

Metric ISO thread

R = right hand version shown

Part number	Pitch		E	f	a	d	l ₂	l ₅	D _{min}
	tpi	mm							
R 105.0205.2.3				.055	.106	.083	.591	1.181	.118
R 105.0205.3.4				.075	.146	.106	.787	1.378	.157
R 105.0205.3.5	32-64	0.5	.014	.091	.185	.138	.787	1.378	.197
R 105.0205.4.5				.091	.185	.138	.984	1.575	
R 105.0205.3.6				.130	.224	.189	.787	1.378	.236

Carbide grades			
MG12	TN35	TI25	TH35
○	●	○	○

● Standard
○ Semistandard
Please check price and delivery for all ○ items

Dimensions in inch

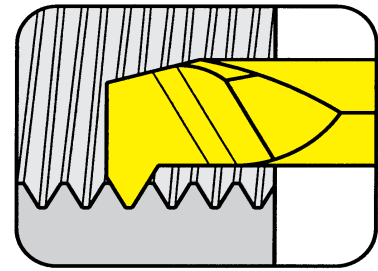
THREADING (Internal) partial profile



INSERT Type

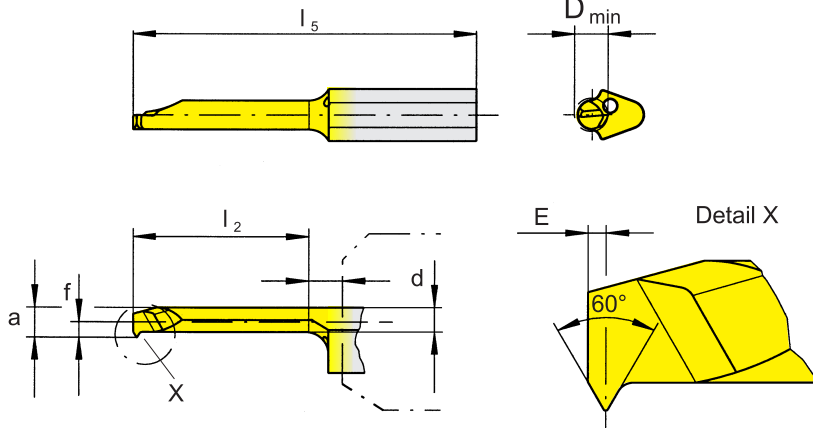
105

Bore Ø	.118" (3.0 mm)
Pitch	0.25 mm
Threads per inch	56 - 84 tpi



for use with toolholder

- Type BU105
B105



Metric ISO thread

R = right hand version shown

Part number	Pitch		E	f	a	d	l ₂	l ₅	D _{min}
	tpi	mm							
R 105.0102.2.3	56-84	0.25	.012	.055	.106	.087	.591	1.181	.118

Dimensions in inch

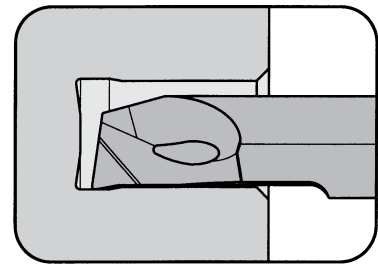
Carbide grades			
MG12	TN35	TI25	TH35
○	●	○	○

- Standard
- Semistandard

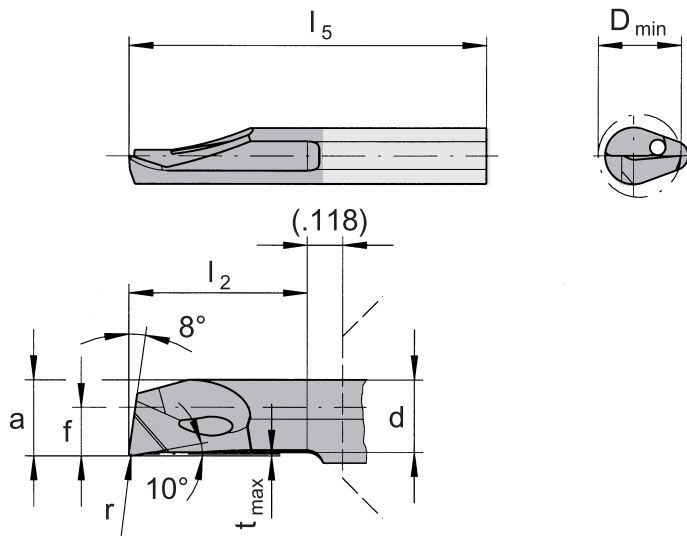
Please check price and delivery for all ○ items

INSERT Type

105



Bore Ø .236" (6.0 mm)



for use with toolholder

- Type BU105
B105

reinforced version

R = right hand version shown L = left hand version

Part number	f	a	d	l_2	l_5	t_{max}	r	D_{min}
R/L 105.1033.1.6				.394	.984			
R/L 105.1033.2.6				.591	1.181			
R/L 105.1033.3.6	.130	.224	.213	.787	1.378	.006	.008	.236
R/L 105.1033.4.6				.984	1.575			
R/L 105.1033.5.6				1.181	1.772			
R/L 105.1033.6.6				1.378	1.969			

Carbide grades			
MG12	TN35	TI25	TH35
○	○	○	●

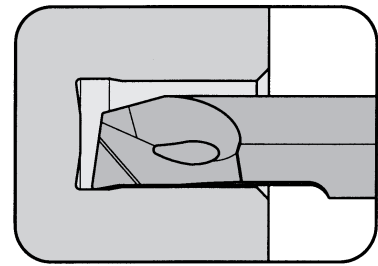
- Standard
 - Semistandard
- Please check price and delivery for all ○ items

State R or L version

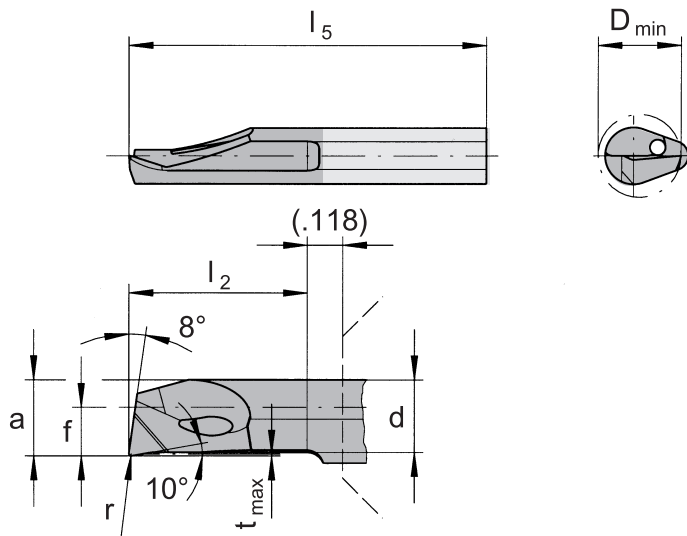
Dimensions in inch

INSERT Type

105



Bore Ø .268" (6.8 mm)



for use with toolholder

- Type BU105
B105

reinforced version

R = right hand version shown L = left hand version

Part number	f	a	d	l_2	l_5	t_{max}	r	D_{min}
R/L 105.1040.1.7				.394	.984			
R/L 105.1040.2.7				.591	1.181			
R/L 105.1040.3.7	.157	.252	.240	.787	1.378	.006	.008	.268
R/L 105.1040.4.7				.984	1.575			
R/L 105.1040.5.7				1.181	1.772			
R/L 105.1040.6.7				1.378	1.969			

Carbide grades			
MG12	TN35	TI25	TH35
○	○	○	●

- Standard
 - Semistandard
- Please check price and delivery for all ○ items

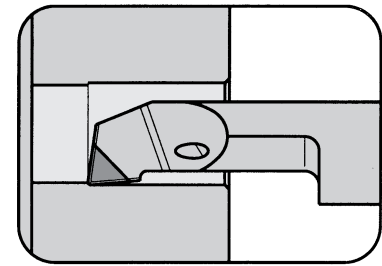
State R or L version

Dimensions in inch

INSERT Type

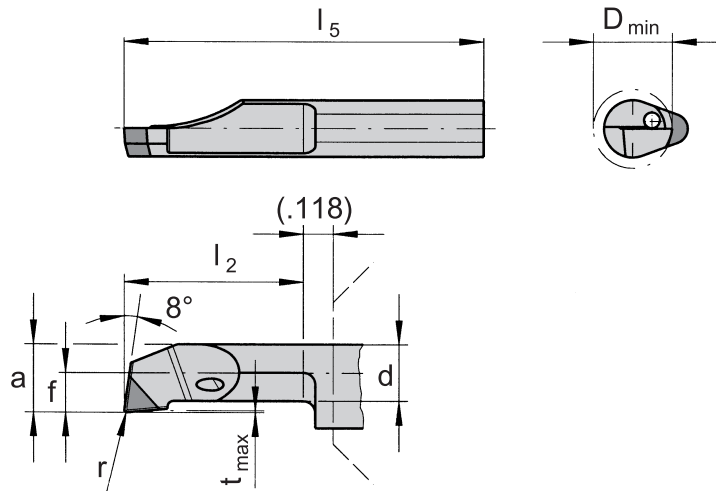
105

Bore Ø from .118" (3.0 mm)



for use with toolholder

- Type BU105
B105



R = right hand version shown

Part number	f	a	d	l ₂	l ₅	t _{max}	r	D _{min}
R 105.0513.0.3.B	.051	.106	.098	.275	.984	.004	.006	.118
R 105.0519.1.4.B	.059	.146	.134	.394	.984	.004	.008	.157
R 105.0523.2.5.B	.091	.185	.173	.591	1.181	.004	.008	.197
R 105.0533.2.6.B	.130	.224	.209	.591	1.181	.006	.008	.236
R 105.0540.2.7.B	.157	.252	.236	.591	1.181	.006	.008	.268

CBN grades				
CB10				
•				

- Standard
- Semistandard

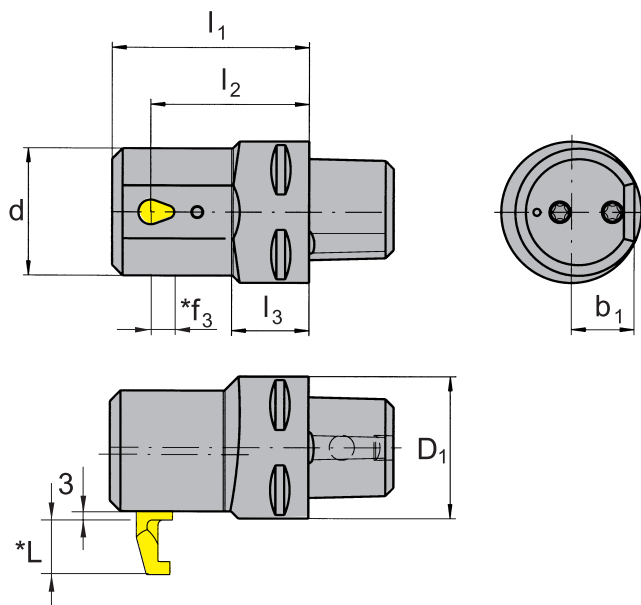
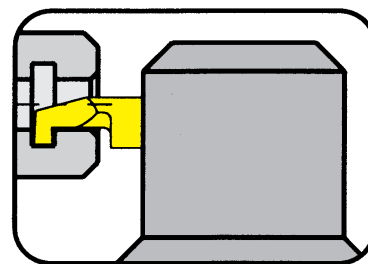
Please check price and delivery for all ○ items

Dimensions in inch

MODULAR TOOLING SYSTEMS

RB110.00C...

Adaptor for inserts type 110 Horn-Capto Licence Sandvik



for use with insert

- Type U110
110

INDEX Multi spindle system
MS32 / MS52

Part number	D ₁	d	l ₁	l ₂	l ₃	b ₁	Machine type
RB110.00C3.2.2.02	32	36	56	45	15	18	MS32
RB110.00C4.2.2.02	40	36	56	45	22	18	MS52

Further shank sizes upon request.

Dimensions in mm

* Dimensions f₃ and L please see inserts type 110 in our catalog "CARBIDE GROOVING TOOLS", Chapter A

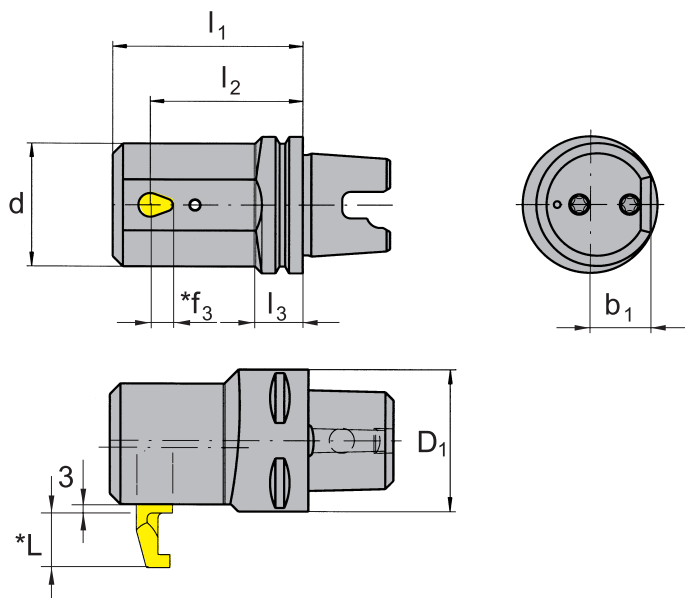
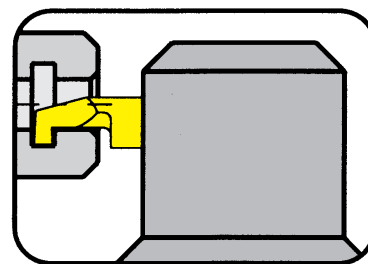
Spare parts

Toolholder	Screw	Torx screw driver
RB110...	6.075 T15	T15

MODULAR TOOLING SYSTEMS

RB110.KM...

Adaptor for inserts type 110 Horn-KM Licence Kennametal



for use with insert

- Type U110
110

INDEX Multi spindle system
MS32 / MS52



Part number	D ₁	d	l ₁	l ₂	l ₃	b ₁	Machine type
RB110.KM40.2.2.02	40	36	56	45	14	18	MS32
RB110.KM50.2.2.02	50	36	56	45	22	18	MS52

Further shank sizes upon request.

Dimensions in mm

* Dimensions f₃ and L please see inserts type 110 in our catalog "CARBIDE GROOVING TOOLS", Chapter A

Spare parts

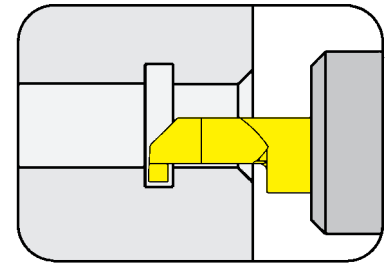
Toolholder	Screw 	Torx screw driver 
RB110...	6.075 T15	T15

GROOVING (internal) $\geq \text{Ø} .236''$

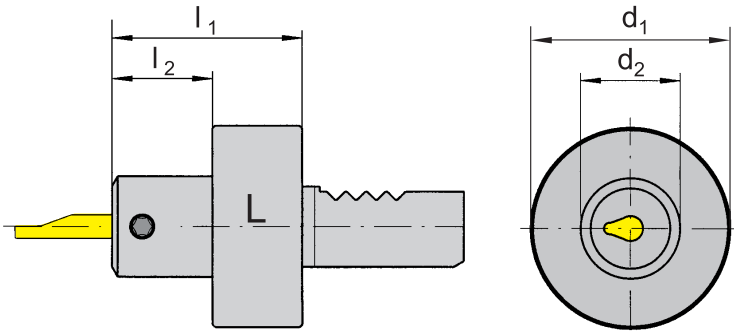


TOOLHOLDER Type

VDI
with through coolant

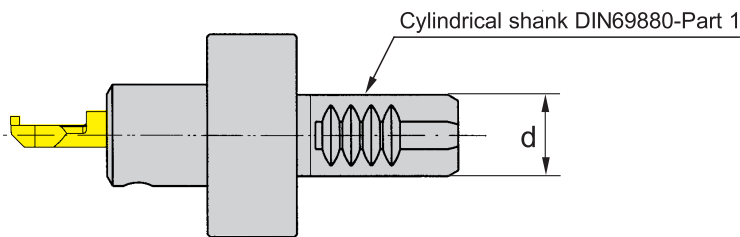


Bore Ø .236" (6.0 mm)



for use with insert

- Type U110
110



L = left hand version shown R = right hand version

Part number	d	d ₁	d ₂	l ₁	l ₂
VDI16.R110.30.02	16	40			
VDI20.R110.30.02	20	50	22	48	30
VDI25.R110.30.02	25	58			
VDI30.R110.30.02	30	68			
VDI16.L110.30.02	16	40			
VDI20.L110.30.02	20	50	22	48	30
VDI25.L110.30.02	25	58			
VDI30.L110.30.02	30	68			

State R or L version
Further shank sizes upon request.

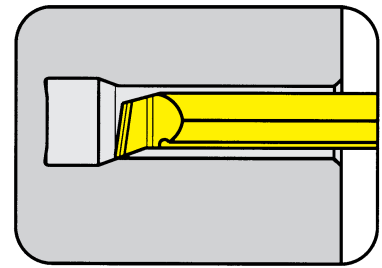
Dimensions in mm

Spare parts

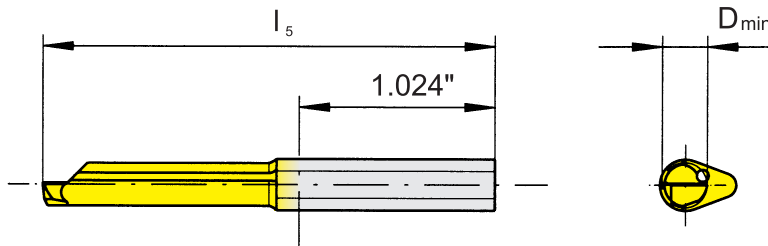
Toolholder	Screw	Torx screw driver
RB110...	6.075 T15	T15

INSERT Type

110

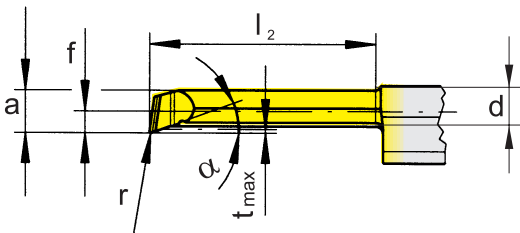


Bore Ø from .236" (6.0 mm)



for use with toolholder

- Type BU110
B110



R = right hand version shown

Part number	f	a	d	l ₂	l ₅	t _{max}	α	r	D _{min}	Carbide grades			
										MG12	TN35	TJ25	TH35
R 110.1829.9.H6	.114	.224	.189	1.969	3.150	.020	20°	.008	.236	○	○	●	○
R 110.1829.9.H8	.157	.291	.236	1.969	3.150	.020	20°	.008	.315	○	○	○	○

- Standard
- Semistandard

Dimensions in inch

Please check price and delivery for all ○ items

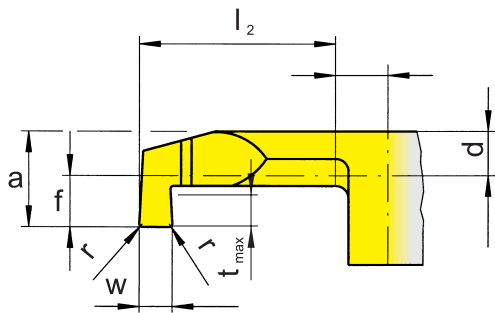
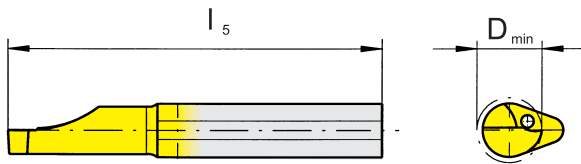
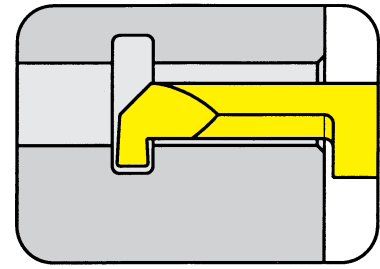
GROOVING (internal) $\geq \text{Ø} .315''$



INSERT Type

110

Bore Ø .315" (8.0 mm)



for use with toolholder

- Type BU110
B110

R = right hand version shown

Part number	w +.002	f	a	d	l ₂	l ₅	t _{max}	r	D _{min}	Carbide grades			
										MG12	TN35	TI25	TH35
R 110.0200.02.3.8	.079	.157	.291	.165	.787	1.969	.110	.008	.315	○	●	○	○

Dimensions in inch

- Standard
- Semistandard

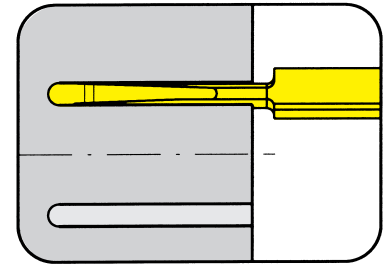
Please check price and delivery for all ○ items

FACE GROOVING (Internal)

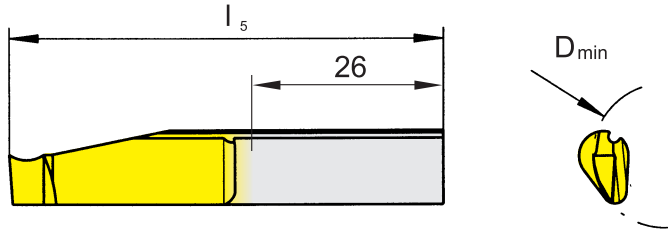


INSERT type

A110

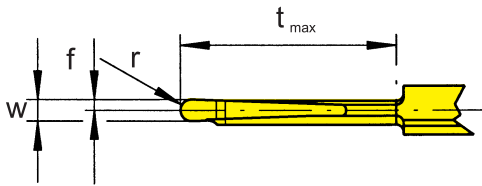


from outer-Ø	.787"	(20.0 mm)
Depth of groove up to	1.181"	(30.0 mm)
Width of groove	.118"	(3.0 mm)



for use with toolholder

- Type R/L BU110
R/L B110



L = left hand version shown R = right hand version

Part number	w ^{+0.02}	r	f	l ₅	t _{max} [*]	D _{min} [*]	Carbide grades								
R/L A110.2030.15.5.0	.118	.059	.059	2.362	1.181	.787	<table border="1"> <tr> <td>MG12</td> <td>TN35</td> <td>TI25</td> <td>TF45</td> </tr> <tr> <td>○</td> <td>●</td> <td>○</td> <td>○</td> </tr> </table>	MG12	TN35	TI25	TF45	○	●	○	○
MG12	TN35	TI25	TF45												
○	●	○	○												

State R or L version
Dimensions in inch

- Standard
- Semistandard

Please check price and delivery for all ○ items

*Face grooving with full width to the full depth only possible between D_a .787"- 1.969".

NOTE:

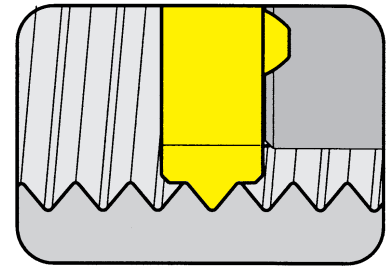
Use insert RA110 in toolholder RB110
Use insert LA110 in toolholder LB110

THREADING (Internal) full profile

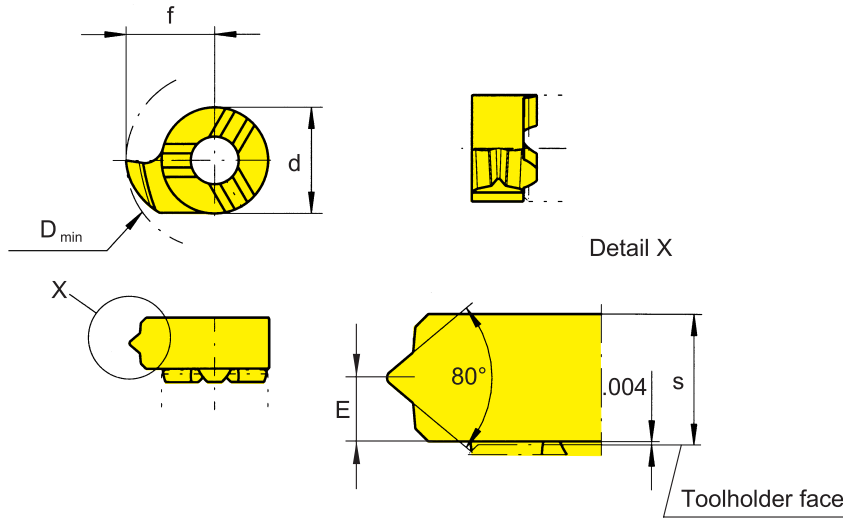


INSERT Type

108



Bore Ø .315" (8.0 mm)
Threads per inch 18 / 20 tpi



for use with toolholder

- Type BU108
B108

for thread profile PG

R = right hand version shown

Part number	tpi	E	s	f	d	D _{min}
R 108.PG18.02	18	.075	.142	.189	.236	.315
R 108.PG20.02	20					

Carbide grades			
MG12	TN35	TI25	TH35
○	●	○	○

- Standard
- Semistandard

Dimensions in inch

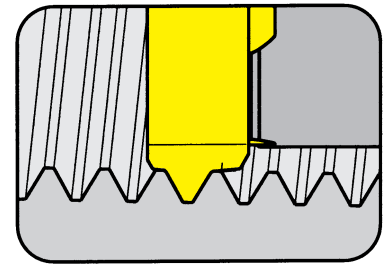
Please check price and delivery for all ○ items

THREADING (Internal) full profile

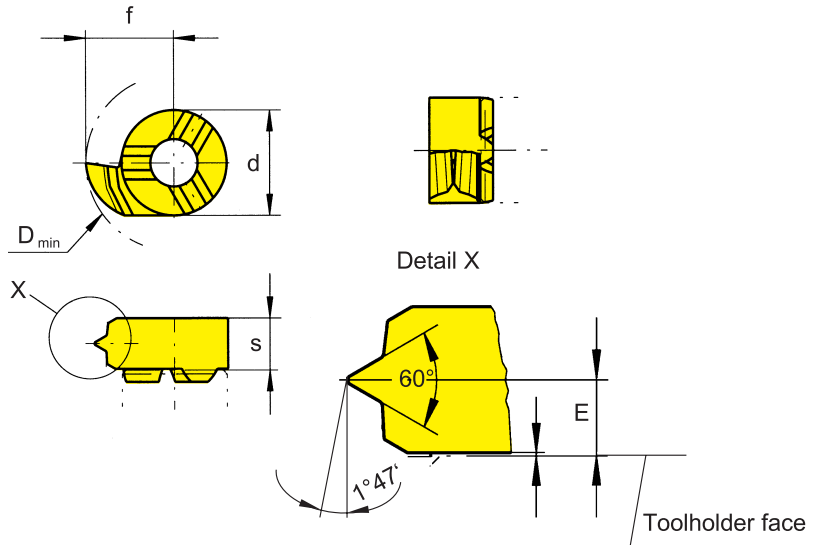


INSERT Type

108



Bore Ø .315" (8.0 mm)
Threads per inch 14 / 18 / 27 tpi



for use with toolholder

- Type BU108
B108

for thread NPT

R = right hand version shown

Part number	tpi	E	s	f	d	D _{min}
R 108.NP14.02	14					
R 108.NP18.02	18	.075	.142	.189	.236	.315
R 108.NP27.02	27					

Carbide grades			
MG12	TN35	TI25	TH35
○	●	○	○

- Standard
- Semistandard

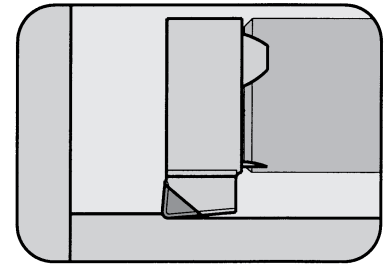
Please check price and delivery for all ○ items

Dimensions in inch

INSERT Type

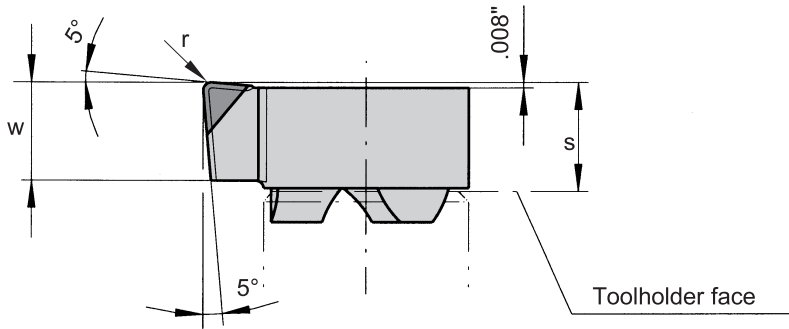
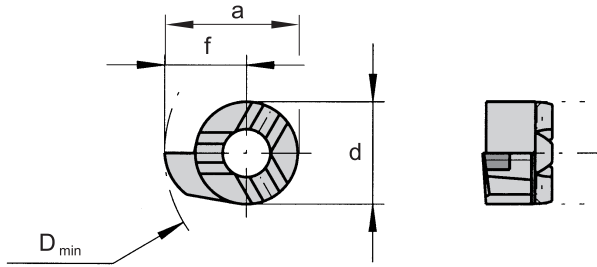
108/111/114/116

Bore Ø from .315" (8.0 mm)



for use with toolholder

- Type BU108/B108
BU111/B111
BU114/B114
BU116/B116



R = right hand version shown

Part number	f	a	d	s	r	D _{min}
R 108.0547.03.B	.183	.303	.236	.138	.012	.315
R 111.0557.03.B	.224	.382	.315	.156	.012	.394
R 111.0567.03.B	.264	.421	.315	.156	.012	.433
R 114.0572.04.B	.285	.461	.354	.209	.016	.492
R 116.0582.04.B	.323	.539	.433	.209	.016	.551

CBN grades				
CB10				
●				

- Standard
- Semistandard

Please check price and delivery for all ○ items

Dimensions in inch

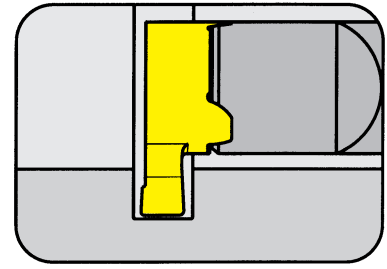
GROOVING Internal $\geq \text{Ø } .354''$



TOOLHOLDER type

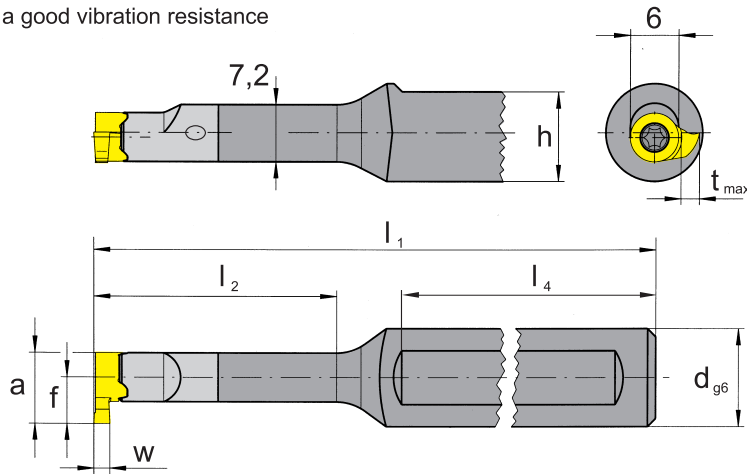
R/LB10P

with through coolant



Bore Ø from	.354" (9.0 mm)
Depth of groove up to	.118" (3.0 mm)
Width of groove up to	.098" (2.5 mm)

Material of shank: Carbide -
Giving a good vibration resistance



for use with insert

- Type R/L10P

Right hand version shown

Part number	l_1	l_2	l_4	d_{g6}	h	f	a	t_{max}	Width of groove "w"
R/LB10P.0012.00	70	12.5	40						1.0 - 3.0 (.039" - .118")
R/LB10P.0012.01	80	21.0	45	12	11	see insert			
R/LB10P.0012.02	90	30.0	45			see insert			



State R or L version

Dimensions in inch / mm
Further shank sizes upon request

Note

Toolholders with damaged seating can be repaired by HORN USA.

Spare parts

Toolholder	Screw 	Torx screw driver 
R/L B10P...	2.6.5T8E	T8

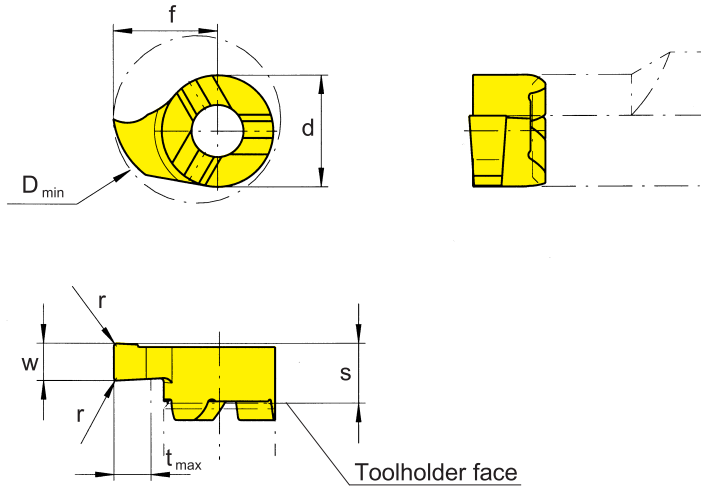
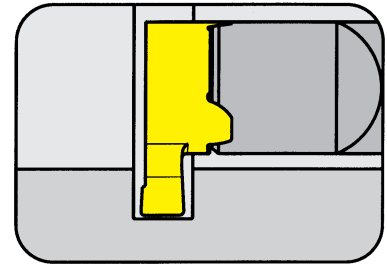
GROOVING Internal $\geq \text{Ø} .354''$



INSERT type

10P

Bore Ø from	.354" (9.0 mm)
Depth of groove up to	.083" (2.1 mm)
Width of groove up to	.098" (2.5 mm)



for use with toolholder

- Type R/LB10P

R = right hand version shown

Part number	W +.001	r	s	f	d	t _{max}	D _{min}
R/L10P.0100.1.00	.039	-					
R/L10P.0150.1.00	.059	-					
R/L10P.0200.1.02	.079	.008	.142	.220	.236	.083	.354
R/L10P.0250.1.02	.098	.008					
R/L10P.0300.1.02	.118	.008					

Carbide grades			
MG12	TN35	TI25	TH35
○	○	○	●

- Standard
- Semistandard

Please check price and delivery for all ○ items

State R or L version
Dimensions in inch

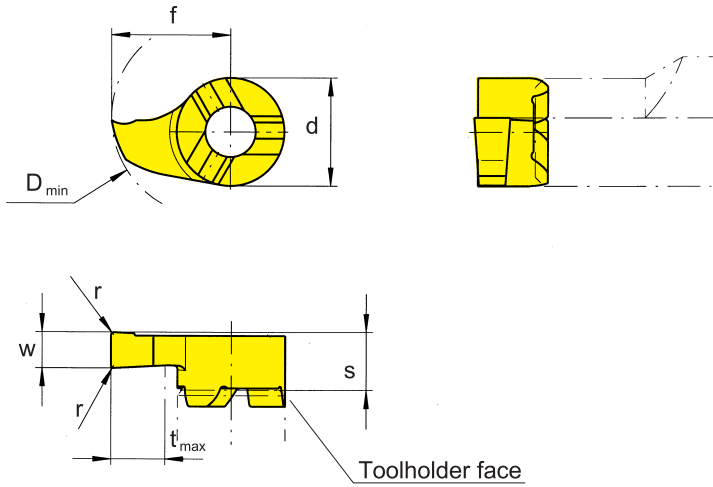
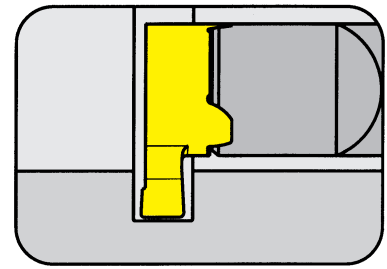
GROOVING Internal $\geq \text{Ø} .394''$



INSERT type

10P

Bore Ø from	.394" (10.0 mm)
Depth of groove up to	.122" (3.1 mm)
Width of groove up to	.079" (2.0 mm)



for use with toolholder

- Type R/LB10P

R = right hand version shown

Part number	W +.001	r	s	f	d	t _{max}	D _{min}
R/L10P.0100.2.00	.039	-					
R/L10P.0150.2.00	.059	-	.142	.260	.236	.122	.394
R/L10P.0200.2.02	.079	.008					

Carbide grades			
MG12	TN35	TI25	TH35
○	○	○	●

- Standard
- Semistandard

Please check price and delivery for all ○ items

State R or L version
Dimensions in inch

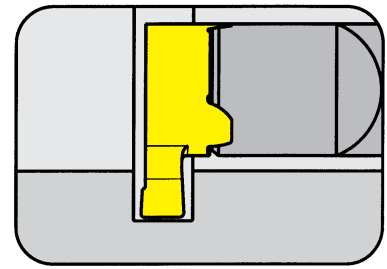
GROOVING Internal $\geq \text{Ø} .413''$



TOOLHOLDER type

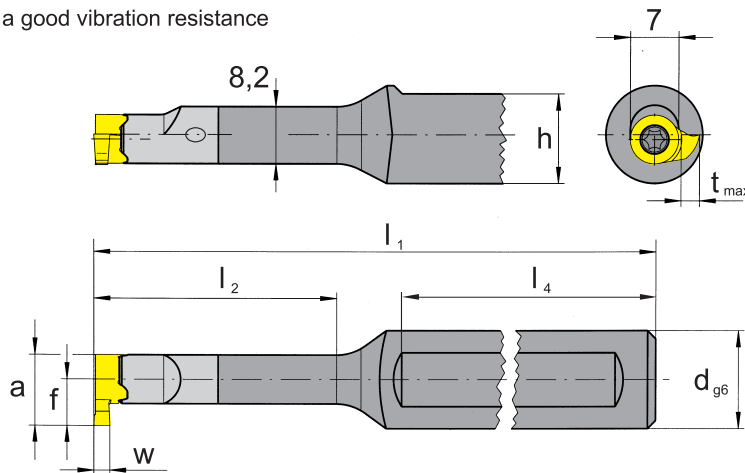
R/LB11P

with through coolant



Bore Ø from	.413" (10.5 mm)
Depth of groove up to	.138" (3.5 mm)
Width of groove up to	.098" (2.5 mm)

Material of shank: Carbide -
Giving a good vibration resistance



for use with insert

- Type R/L11P

Right hand version shown

Part number	l_1	l_2	l_4	d_{g6}	h	f	a	t_{max}	Width of groove "w"
R/LB11P.0012.00	75	15	40						
R/LB11P.0012.01	95	26	45	12	11	see insert			1.0 - 3.0 (.039" - .118")
R/LB11P.0012.02	110	37	45						



State R or L version

Dimensions in inch / mm
Further shank sizes upon request

Note

Toolholders with damaged seating can be repaired by HORN USA.

Spare parts

Toolholder	Screw 	Torx screw driver 
R/L B11P...	2.6.5T8E	T8

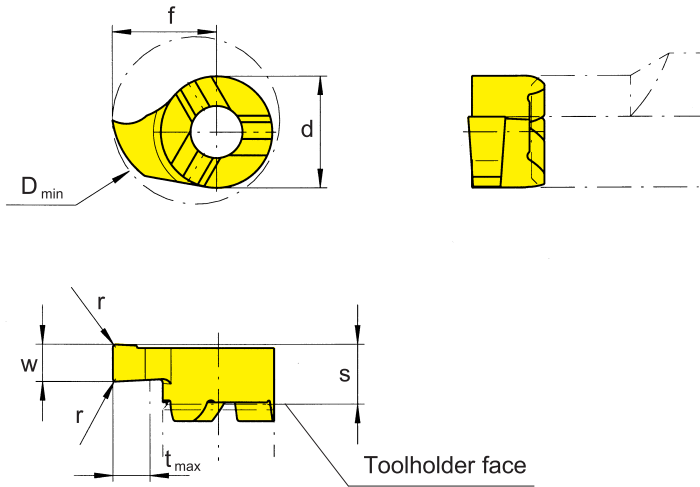
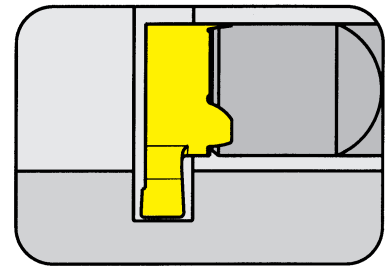
GROOVING Internal $\geq \text{Ø} .413''$



INSERT type

11P

Bore Ø from	.413" (10.5 mm)
Depth of groove up to	.098" (2.5 mm)
Width of groove up to	.118" (3.0 mm)



for use with toolholder

- Type R/LB11P

R = right hand version shown

Part number	w +.001	r	s	f	d	t _{max}	D _{min}
R/L11P.0100.1.00	.039	-					
R/L11P.0150.1.00	.059	-					
R/L11P.0200.1.02	.079	.008	.161	.256	.275	.098	.413
R/L11P.0250.1.02	.098	.008					
R/L11P.0300.1.02	.118	.008					

Carbide grades			
MG12	TN35	TI25	TH35
○	○	○	●

- Standard
- Semistandard

Please check price and delivery for all ○ items

State R or L version
Dimensions in inch

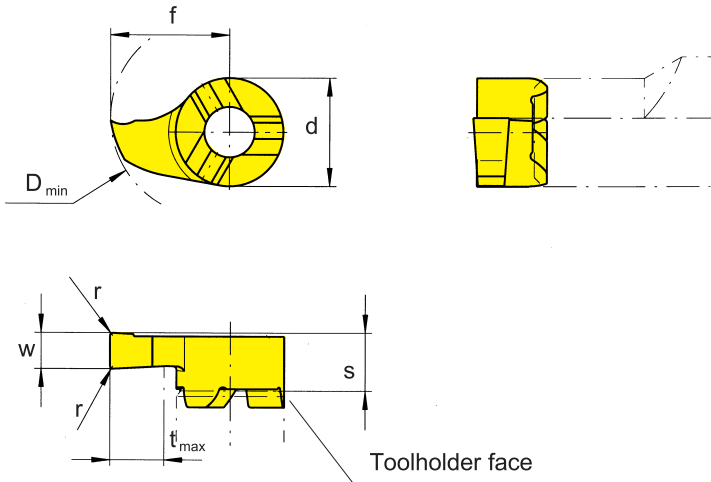
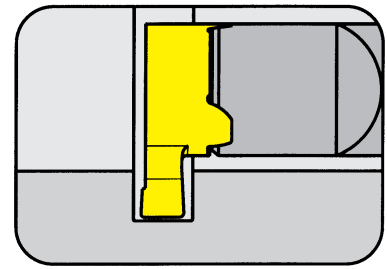
GROOVING Internal $\geq \text{Ø} .453''$



INSERT type

11P

Bore Ø from	.453" (11.5 mm)
Depth of groove up to	.138" (3.5 mm)
Width of groove up to	.079" (2.0 mm)



for use with toolholder

- Type R/LB11P

R = right hand version shown

Part number	w +.001	r	s	f	d	t _{max}	D _{min}
R/L11P.0100.2.00	.039	-					
R/L11P.0150.2.00	.059	-	.161	.295	.275	.138	.453
R/L11P.0200.2.02	.079	.008					

Carbide grades			
MG12	TN35	TI25	TH35
○	○	○	●

- Standard
- Semistandard

Please check price and delivery for all ○ items

State R or L version
Dimensions in inch